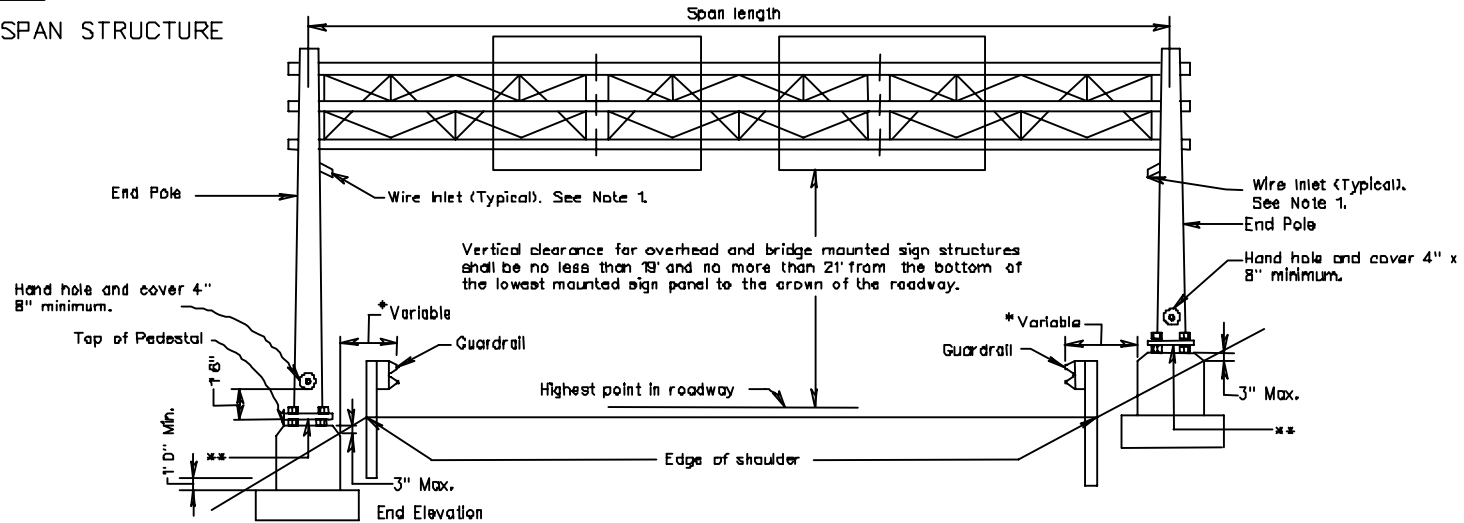
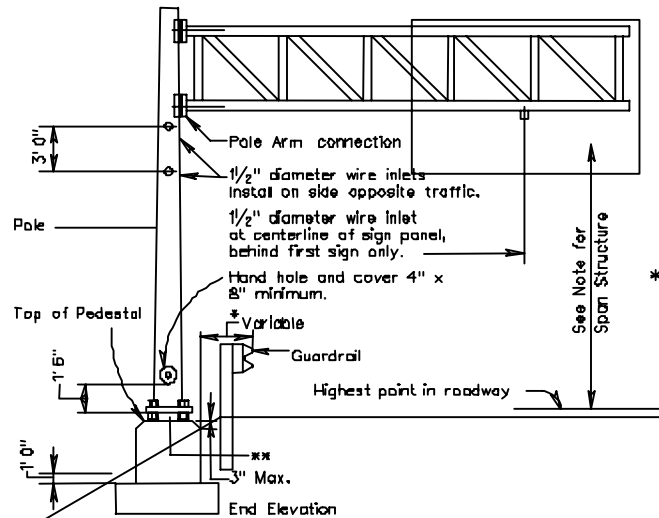


DSS-1

SPAN STRUCTURE



CANTILEVER STRUCTURE



NOTES:

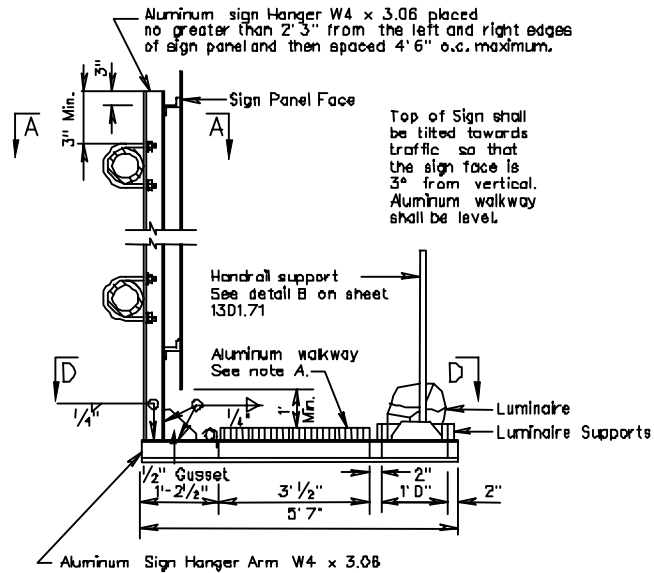
1. 1/2" diameter wire inlets shall be provided at the following locations:
 - A. On span structures on the front leg of end pole 12" below bottom chord.
 - B. On cantilever structures on pole 12" below bottom chord.
 - C. On span structures below bottom chord at centerline behind first sign panel from each end pole.
 - D. On cantilever structures below bottom chord at centerline behind first sign panel from pole.
2. All unused wire inlets shall be capped water tight.
- *3. Distance shall be no less than the minimum indicated in Standard GR-NS.
4. No mortar, grout, or concrete shall be placed between bottom of base plate and top of pedestal.
- **5. Distance between bottom of base plate and top of pedestal shall be less than or equal to twice the diameter of anchor bolt but shall not be greater than 3".

TYPICAL DETAILS FOR OVERHEAD
SIGN STRUCTURES

VIRGINIA DEPARTMENT OF TRANSPORTATION

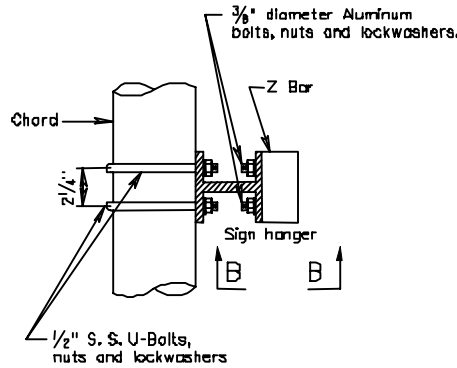
13D1.72

SIGN HANGER ERECTION DETAIL

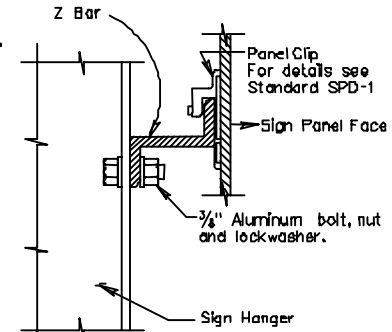


Note A
Walkway, Handrail and Luminaires required only where indicated on the plans.

SECTION A-A



SECTION B-B



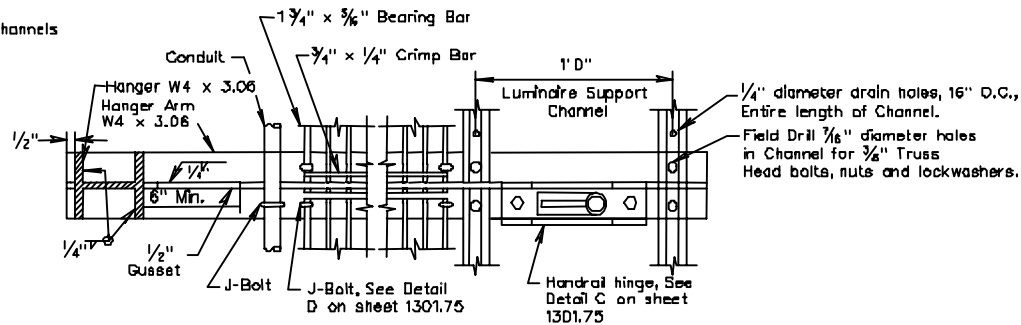
See Standard SSP-VIA for method of attaching alternate sign panel design to sign hanger.

Note:

When required by the plans overhead sign structure luminaires shall be installed on a luminaire retrieval system with supports and electrical system designed for track mounted luminaires. Retrieval system including the electrical system shall be equal to "LUMI-TRAK" and designed for the number of luminaires indicated on the plans. Spacing of hangers used to support the retrieval system shall be increased to a maximum 7 foot distance only where the hangers do not support sign panels. Turntable end of retrieval system shall be of sufficient length to align with the vertical edge of the outside paved shoulder (±6") or shall extend 5 feet beyond the vertical edge (±6") of outermost sign luminaire whichever is greater. The opposite end of retrieval system shall extend a minimum of 6 inches past the outermost vertical edge of the sign hanger arm. Walkway, handrail, luminaire support channels and associated equipment will not be required with the luminaire retrieval system.

SECTION D-D

Luminaire to be attached to Channels with 3/8" galvanized cap screws and spring nuts.

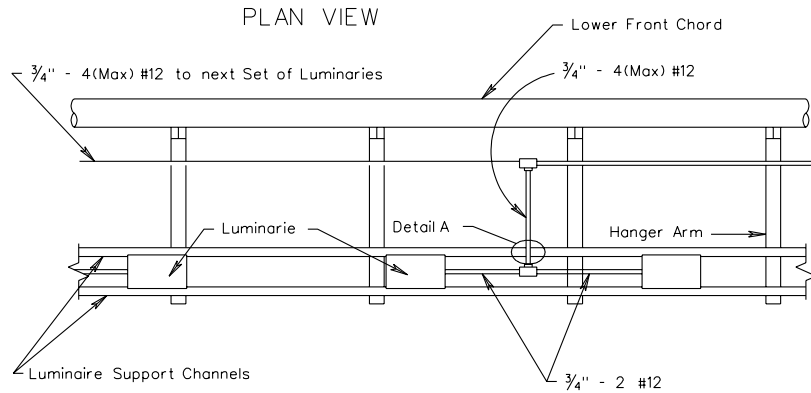


TYPICAL DETAILS FOR OVERHEAD SIGN STRUCTURES

VIRGINIA DEPARTMENT OF TRANSPORTATION

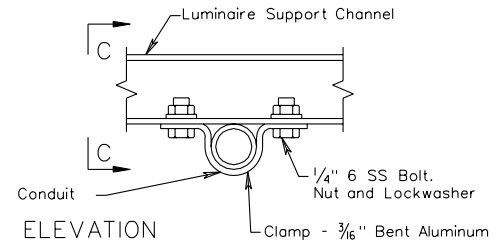
OSS-1

ELECTRICAL INSTALLATION DOUBLE POLE END FRAMES

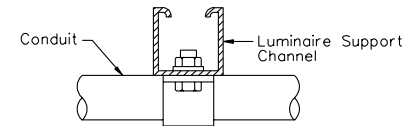


Walkway Grating, if required, is not shown.
Installation for Single Pole Supports to be similar.

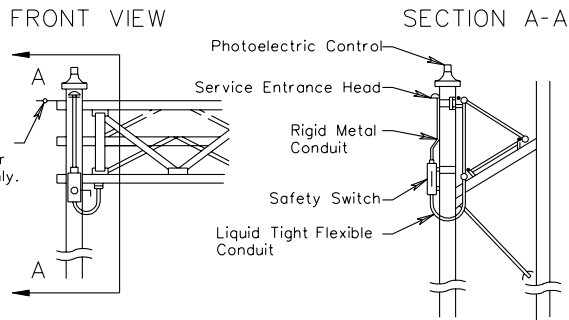
DETAIL A



SECTION A-A

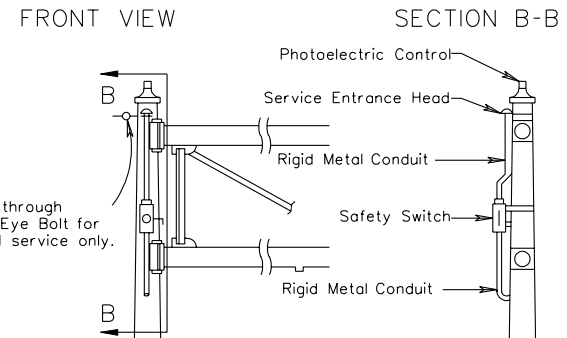


ELECTRIC DETAILS FOR SIGN LIGHTING SPAN SIGN STRUCTURE



$\frac{1}{2}$ " hole through Pole for Eye Bolt for Overhead service only.

ELECTRIC DETAILS FOR SIGN LIGHTING CANTILEVER SIGN STRUCTURE



$\frac{1}{2}$ " hole through pole for Eye Bolt for Overhead service only.

Note:

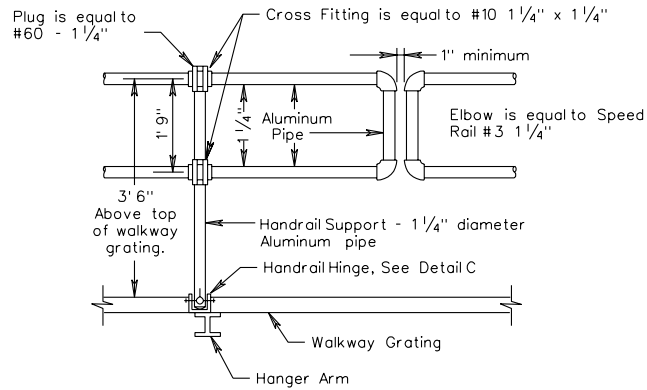
All conduit located in or on cantilever structure shall be $\frac{3}{4}$ " minimum.

TYPICAL DETAILS FOR OVERHEAD SIGN STRUCTURES

VIRGINIA DEPARTMENT OF TRANSPORTATION

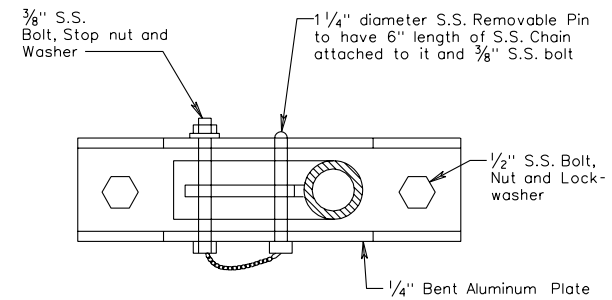
DETAIL B

HANDRAIL ELEVATION



DETAIL C

HANDRAIL HINGE

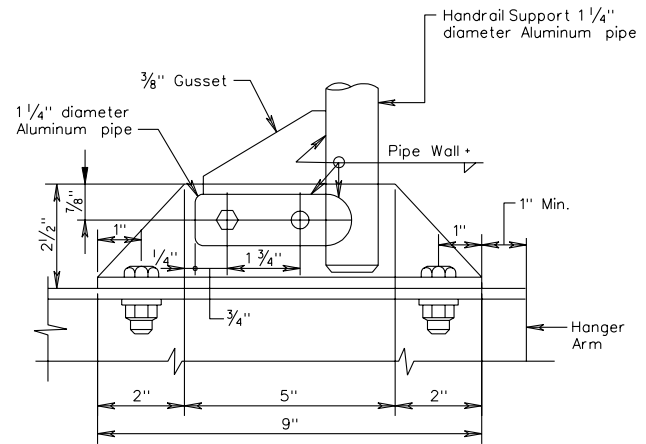
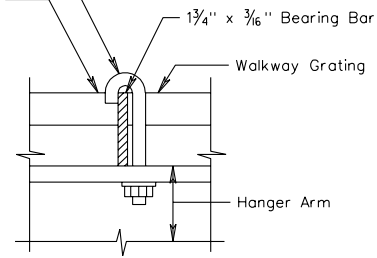


PLAN VIEW

DETAIL D

1/4" S.S. J-Bolt, Stop Nut and Washer

3/4" x 1/8" Crimp Bar

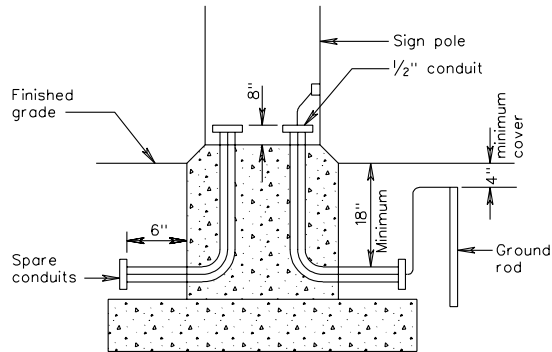


ELEVATION VIEW

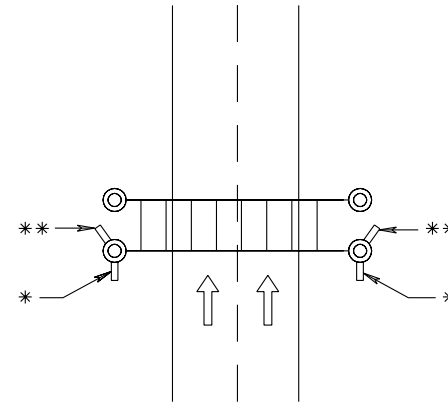
TYPICAL DETAILS FOR OVERHEAD SIGN STRUCTURES

OSS-1

TYPICAL SIGN FOOTING DETAIL WITH CONDUIT



LOCATION OF FUTURE USE CONDUITS FOR DOUBLE END POLE STRUCTURES



NOTES:

The type, size, number and orientation of conduits entering and exiting footings may vary per sign location.

In addition to the conduits specified on the plans, one - 1/2" conduit required for ground wire and two - 2" pvc heavy wall conduits required for future use. Future use conduits shall be stubbed out and capped. Future use conduits shall be oriented to run parallel to the roadway. For location of future use conduits in foundations for double end pole structures, see drawing at right.

Each foundation shall be permanently marked to indicate all sides from which conduits pass. This mark shall be made with a trowel when finishing the concrete and shall be 1/4" deep and 4" to 6" long. Locations of empty conduits shall have an additional 2" long mark made perpendicular to and centered on this mark.

Foundations above finished grade shall be chamfered 3/4" on all edges.

Grounding bushings shall be installed on each end of metal conduits.

Bell ends shall be installed on each end of PVC conduits.

Bell ends & bushings of empty conduits shall be plugged to prevent moisture and rodent entry.

Voids remaining after conductors exit or enter bell ends or bushings of conduits shall be sealed with silicone to prevent moisture and rodent entry.

No mortar, grout, or concrete shall be placed between bottom of base plate and top of pedestal.

* Future use conduits placed parallel to the roadway

** Future use conduits placed at an angle to miss the back foundation or anchor bolts in a spread footing foundation.

TYPICAL DETAILS FOR OVERHEAD SIGN STRUCTURES