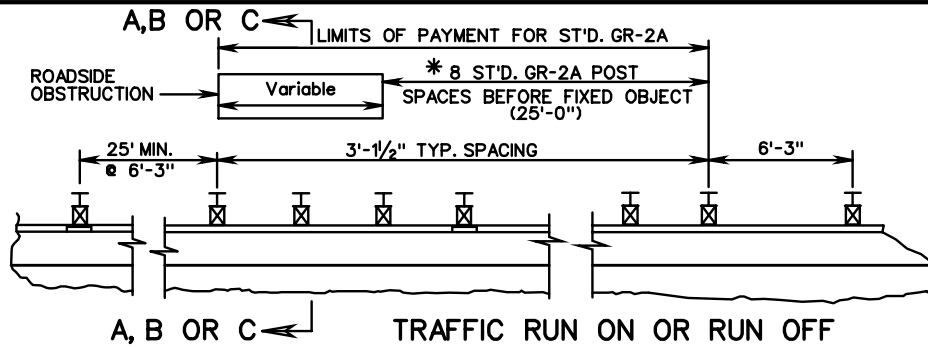
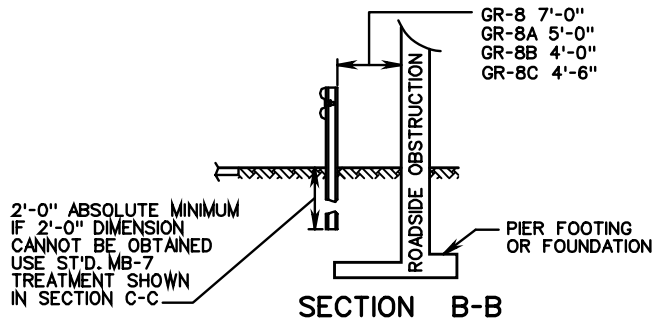


SECTION A-A

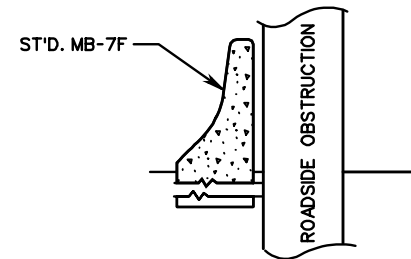


\*FOR TWO WAY TRAFFIC, USE 8 POST SPACING DESIGN FROM EACH END OF FIXED OBJECT.

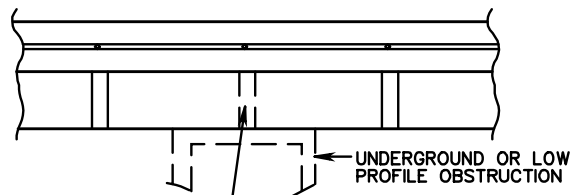
FOR USE WHERE DISTANCE FROM BACK OF GR-2A POST TO FIXED OBJECT IS LESS THAN 2'-0".



SECTION B-B

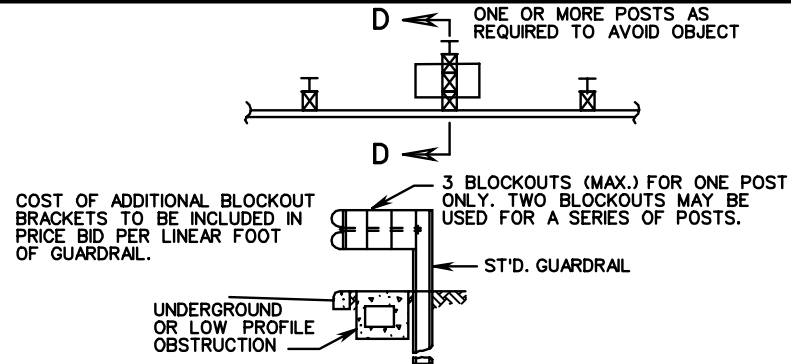


SECTION C-C



NOTE:  
IF GROUND LEVEL OR UNDERGROUND FIXED OBJECT NECESSITATES THE ELIMINATION OF ONE OR MORE POSTS, A GR-10 OR A SPECIAL DESIGN WILL BE REQUIRED

DETAIL OF SPECIAL DESIGN SITUATION



SECTION D-D  
DETAIL OF MULTIPLE BLOCK-OUT TO AVOID UNDERGROUND OR LOW PROFILE OBSTRUCTION

SHEET 3 OF 8

# W BEAM GUARDRAIL INSTALLATION CRITERIA

VIRGINIA DEPARTMENT OF TRANSPORTATION

SPECIFICATION REFERENCE

221  
505