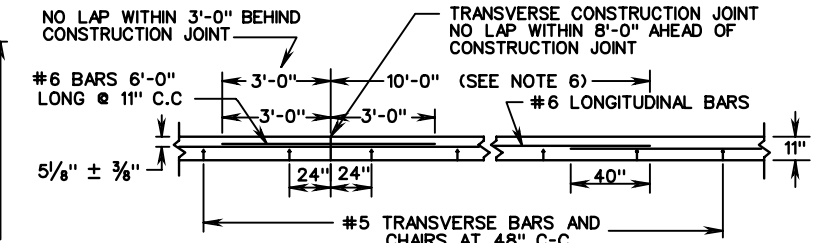
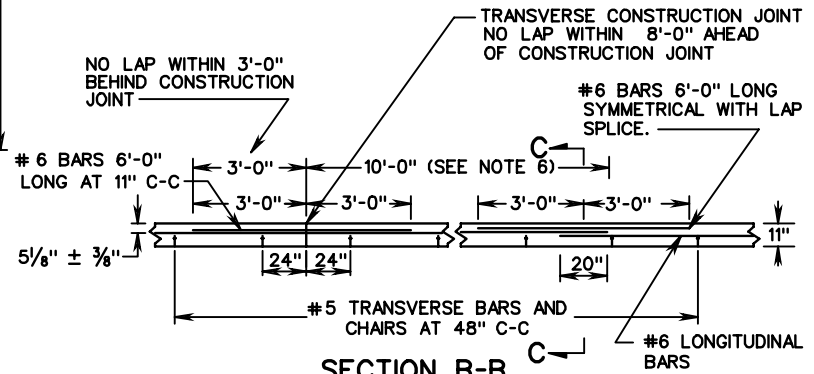


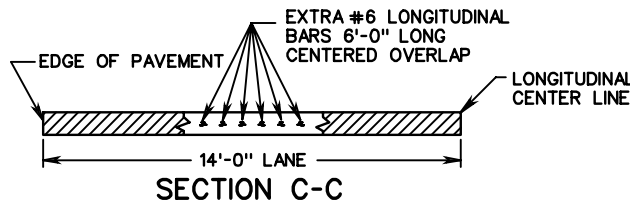
PLAN VIEW  
CONTINUOUSLY REINFORCED CONCRETE PAVEMENT



SECTION B-B  
DOUBLE LAP METHOD



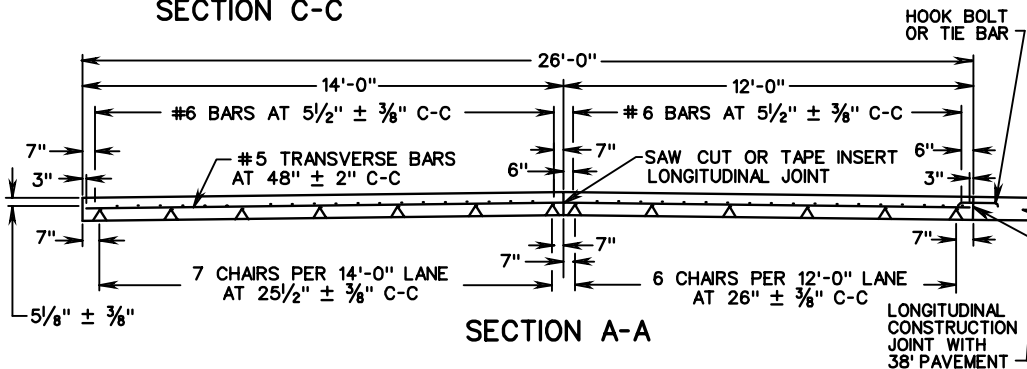
SECTION B-B  
EXTRA BAR METHOD



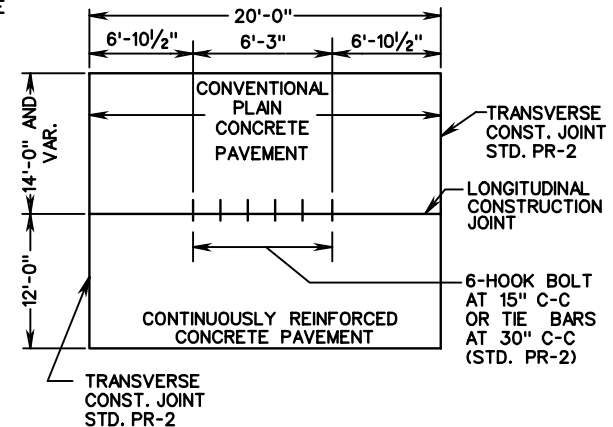
SECTION C-C

BARS TO BE SECURELY FASTENED TO PREVENT SEPARATION DURING CONCRETE PLACEMENT.

TYPICAL  
LONGITUDINAL LAP



SECTION A-A



PLAN-RAMP & MAIN LINE  
CONNECTION

SEE SHEET 3 OF 3 FOR NOTES

SHEET 1 OF 3

SPECIFICATION REFERENCE
316

# 11" THICK CONTINUOUSLY REINFORCED CONCRETE PAVEMENT 14 FOOT TRAVEL LANE

VIRGINIA DEPARTMENT OF TRANSPORTATION

REV. 7/03

301.19