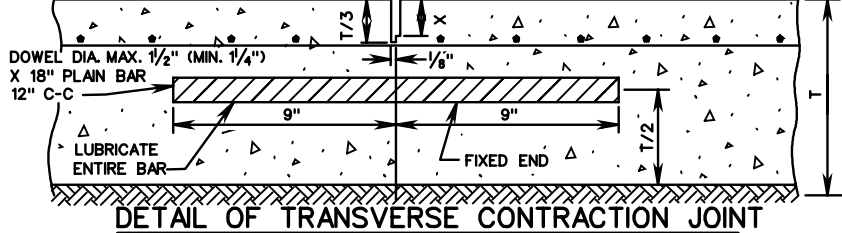


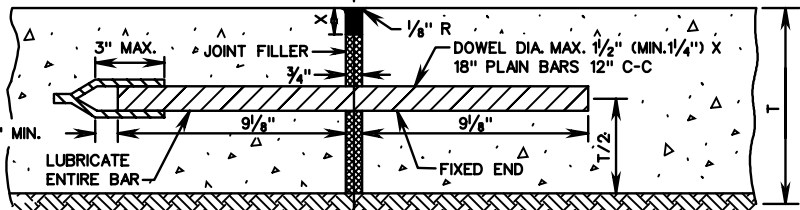
PR-2

⊗ JOINT SEALANTS TO BE IN ACCORDANCE WITH DETAILS SHOWN ON STANDARD PR-2 SHEET 3 OF 5. FOR X AND Y DIMENSIONS SEE STANDARD PR-2 SHEET 3 OF 5.



**DETAIL OF TRANSVERSE CONTRACTION JOINT**

⊗ SEAL WITH AN APPROVED JOINT SEALANT. A BAND BREAKING MATERIAL IS TO BE PROVIDED BETWEEN THE JOINT FILLER AND SEAL.



**DETAIL OF TRANSVERSE EXPANSION JOINT**

FOR X AND Y DIMENSIONS SEE STANDARD PR-2 SHEET 3 OF 5.



FIGURE 1



FIGURE 2

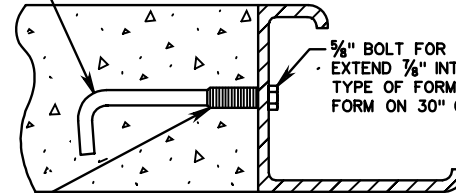
METHOD OF FINISHING

AT EXPANSION JOINTS

SMOOTH SURFACE TO BE STEEL TROWELED 8" IN FROM THE EDGE OF PAVEMENT EVERY 500', AND STATION NUMBER STAMPED INTO IT. THE DATE IS TO BE SHOWN IN A SIMILAR MANNER AT THE BEGINNING OF EACH DAYS POUR.

BOTH OUTSIDE EDGES OF DIVIDED HIGHWAY TO BE STAMPED. ONE EDGE OF UNDIVIDED HIGHWAYS WHERE FEASIBLE.

3/8" EFFECTIVE DIAMETER X 6" HOOK BOLT



3/8" BOLT FOR TEMPORARY ATTACHMENT TO FORM TO EXTEND 1/8" INTO SLEEVE. LENGTH WILL DEPEND UPON TYPE OF FORM. PROVIDE 3/4" HOLES IN CENTER OF FORM ON 30" CENTERS TO RECEIVE 3/8" BOLTS.

NOTE:

3/8" EFFECTIVE DIAMETER HOOK BOLTS TO BE 3/8" DIAMETER STOCK FOR ROLLED THREADS AND 3/8" DIAMETER STOCK FOR CUT THREADS O.D. OF THREADED PORTION TO BE 5/8".

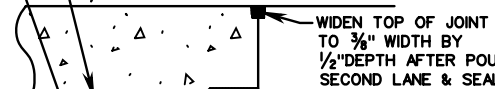
ANY SIMILAR DEVICE OF EQUAL STRENGTH WILL BE ACCEPTED IF APPROVED BY THE ENGINEER.

NOTE:

#5 X 2'-6" DEFORMED TIE BARS AT 30" C-C MAY BE USED IN LIEU OF HOOK BOLTS.

1 3/4" MIN., MALLEABLE IRON OR STEEL SLEEVE THREADED ENTIRE LENGTH ON INSIDE TO RECEIVE 3/8" BOLT.

3/8" EFFECTIVE DIAMETER X 6" HOOK BOLT.



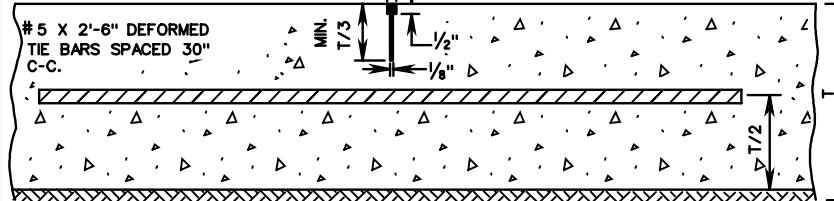
WIDEN TOP OF JOINT TO 3/8" WIDTH BY 1/2" DEPTH AFTER POURING SECOND LANE & SEAL.

3/8" EFFECTIVE DIAMETER X 8" HOOK BOLT

**DETAIL OF LONGITUDINAL JOINT HOOK BOLTS**

SHOWING PAVEMENT POURED IN SINGLE LANES

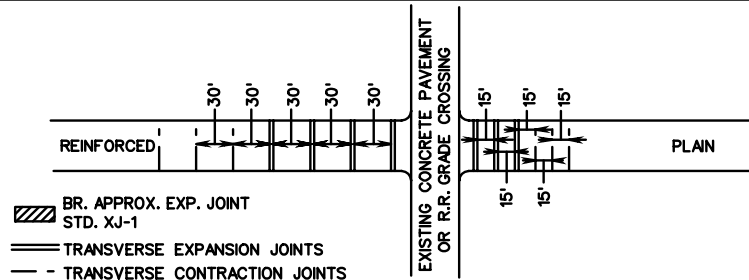
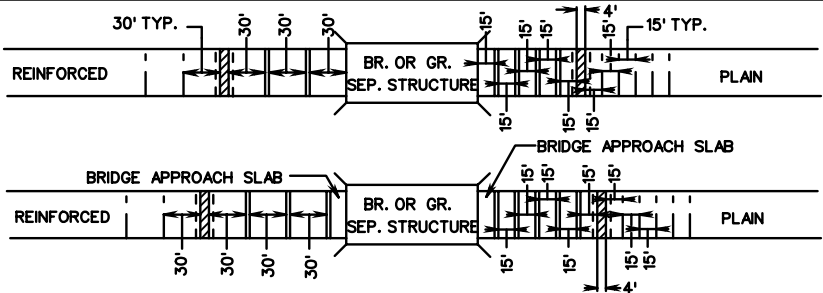
WIDEN TOP OF GROOVE TO 3/8" WIDTH BY 1/2" DEPTH & SEAL IF ASPHALT TOP NOT USED.



GRADE 40 TIE BARS MAY BE PRE-BENT AND STRAIGHTENED ONE TIME ONLY FOR MULTI-LANE CONSTRUCTION IN ACCORDANCE WITH SPECIFICATIONS.

**DETAIL OF LONGITUDINAL JOINT TIE BARS**

SHOWING ADJACENT LANES POURED SIMULTANEOUSLY



BR. APPROX. EXP. JOINT  
STD. XJ-1  
— TRANSVERSE EXPANSION JOINTS  
- - TRANSVERSE CONTRACTION JOINTS

**DETAILS OF JOINTS LAYOUTS**

(FOR USE WHEN COVERED ON JOINT LAYOUTS IN PLANS)

SHEET 2 OF 5

**PLAN AND REINFORCED CONCRETE PAVEMENT  
SHOWING REINFORCEMENT, LONGITUDINAL AND TRANSVERSE JOINTS**

SPECIFICATION  
REFERENCE

316

VIRGINIA DEPARTMENT OF TRANSPORTATION

Rev. 7/03

301.02